

Medicaid Planning with (d)(4)(C) Pooled Trusts

What every Good Medicaid Planner Needs to Know After DRA



Massachusetts Chapter of the National Academy of Elder Law Attorneys
Originally Presented on June 12, 2008
Updated on May 13, 2010

Leading the Way in Special Needs and Elder Law

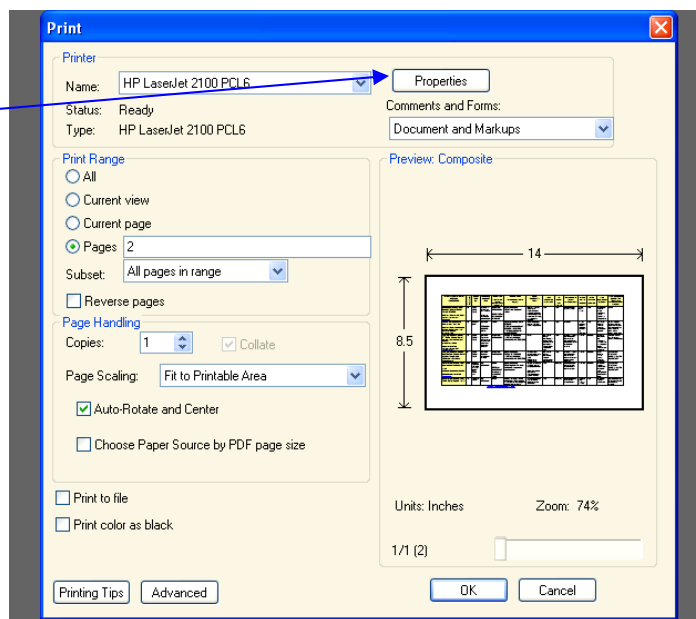
For best results, print the chart on the next page using 8 ½ x 14 inch paper (**Legal Size**), and the **“Landscape”** setting on your Adobe print dialog box.

Click on the Properties button to access these paper setting controls.

[Return to MassHealthHELP.com](http://MassHealthHELP.com)



Law Office of John L. Roberts
1200 Converse Street
Longmeadow, Massachusetts 01106
(413) 567-5600



Name Of Pooled Trust, TRUSTS Address, Contact Info	# of Benef's /Assets	Funds Held by:	Minimum Account Size	Intake Fee to screen applicant, set up sub - account, & IRS Taxpayer ID	Annual Fees To cover investment services, disbursements, record keeping	Other Continuing Fees	Accept Trusts Established by A Court?	Trusts for Benefi- ciary Over Age 65?	Disbursement Checks paid in house? or out sourced?	Turn around time to pay invoices	Can agent under DPOA be paid for services?	Social Work, Case Management Services?	% Of Remainder Kept by The Trust before MassHealth Estate Recovery
Berkshire County ARC Special Needs Pooled Trust (BCARC) Mary Ann Hyatt, PO Box 2, Pittsfield, MA 01202 413 499-4241 ext. 266 Bcarc.org	75 \$2.5 mil	Berk- shire Bank	\$7,500.00 to start the sub account. \$2,500 is considered the minimum	\$500 non- refundable \$600 if POA or guardian involved	\$250 minimum. 2% of sub account value.	Income Tax Prep \$150 / year. assessments for specific costs such as defending a sub- account of the Trust, or beneficiary eligibility.	Yes.	Yes.	Berkshire Bank pays the check.	1 week. Excpt'ns for emer- gency requests	Yes.	Social Work services for the beneficiary can be provided at \$65 per hour.	25%
Family Trust of Mass Peter M. Macy, Exec. Dir. peter@macylaw.com Charles N. Gallo, Administrator 84 State Street – Suite 1100 Boston, MA 02109 (617) 880-6330	265 \$18 mil	Citizens Bank	\$25,000 Waived in hardship cases	None.	3% of principal up to \$80,000 2.5% for amounts of \$80,000 - \$120,000 1.25% for amounts over \$200,000.	\$150 / for grantor letter (Form 1041 and K-1 equivalent)	Yes.	Yes.	In house.	5 – 10 business days. 2 days for emergen- cy requests.	Yes.	No. None included; services available from regular vendors.	\$1,000 to close account at death plus: 5% if account closes in First Year; 10% - 2d year, 15% - 3d yr. Over 3 years: 20%
CJP Disabilities Trust – 3rd Party Pooled Trust Jewish Family & Children's Services; Ilana Gordon Brown IGBrown@jfcbsoston.org 1430 Main St. Waltham, MA 02451 781 647 5327 ext 1966 http://www.cjp.org/page.aspx?id=169735	21 \$2 mil	State Street Bank	\$25,000 (no further disbursement after account balance is below this amount)	\$400 non refundable	2% up to \$200,000 1.5% for principal amounts over \$200,000	None.	No, but will accept beneficiary If another trust can be closed and money transferred to the pooled trust.	Yes.	In house. Service plan for routine disbursement. Special requests reviewed by board of volunteer trustees	1 week	Possibly.	Advocate meets with the beneficiary 4x / year and as needed to review services and providers.	50% to JFCS and Combined Jewish Philanthropy
CJP Disabilities Trust II Self Settled Pooled Trust Jewish Family and Children's Services Same as above	0	State Street Bank	\$12,000 (you can spend down to zero)	\$400 non refundable	\$500 minimum 2% up to \$150,000 1.5% for principal amounts over \$150,000	Annual Check writing fee for more than 50 checks \$300 More than 75 checks: \$500	No, but will accept beneficiary funds if transferred to pooled trust.	Yes.	In house. Service plan for routine disbursement. volunteer trustees review special requests.	1 week	Possibly.	None included. Fee for service available from JF&C	25% of the funds are retained by the trust itself.
PLAN of Massachusetts (Planned Lifetime Network) MARC Special Needs Pooled Trust 617-244-5552 Patricia M. Freedman, Exec Dir 1301 Centre Street Newton Centre, MA 02459 Planofma.org	350 \$16 mil	Cambridge Appleton Trust NA, Federated stock & bond mutual funds	No minimum	\$600 \$750 for enrollment involving Guardian, POA	\$500 minimum 3% of amount in sub - account, charged on a quarterly basis	Current annual cost of \$200 / year for tax preparation fee. Attorney fees and other costs defending claims against the trust	Yes.	Yes.	Checks issued jointly by PLAN of MA and partnering financial institution (Cambridge Appleton Trust)	5 – 10 business days; 24 hours for emergen- cy requests	Possibly.	Annual fee covers 4 hours / year. Additional case management billed at \$100 / hour	25% of the funds are retained by the trust itself.
PLAN of Massachusetts Third Party Pooled Trust	13	Same as above	No minimum	\$750	Funded Accounts: \$500 minimum, 3%. No charge for future funded accounts	Varies on accounts over \$500,000; Tax Prep: \$100 /year	Yes.	Yes.	" Same as above	" Same as above	Yes.	Annual fee covers 4 hours / year	No retention of funds by trust; (Medicaid NA).